



# TECHNICAL RIDER N9 VILLA

VZW DRIEWERF HOERA – MOLENSTRAAT 165 – 9900 EEKLO – BELGIUM

T 0032 9 377 93 94 – [info@n9.be](mailto:info@n9.be) – [www.n9.be](http://www.n9.be)

update: 2019 August 29

## GENERAL INFO

### CONTACT

**N9 villa / venue** vzw Driewerf Hoera  
Molenstraat 165  
9900 Eeklo  
Belgium

**production**  
Sander Wouters  
T 0032 479 34 33 10  
[sander@n9.be](mailto:sander@n9.be)

**N9 offices**  
Molenstraat 31  
9900 Eeklo  
T 0032 9 377 93 94  
[info@n9.be](mailto:info@n9.be)

**technical**  
Patrick Bastien  
T 0032 477 13 62 56  
[patrick@n9.be](mailto:patrick@n9.be)

The office is open on weekdays  
From 10h00 – 18h00

### LAYOUT N9 VILLA

N9 villa is a modestly sized, but well equipped music club. It consists of a concert hall and a bar at ground level, and artist accomodation on the first floor.

#### Concert hall and bar

N9 villa concert hall measures 10m by 12m. The room can contain a maximal amount of 200 people standing and 100 seated. The stage is set up against the back wall of the room. The stage measurements are 7m x 3,60m. The distance from the stage floor up to the ceiling is 2,42m. Behind the stage, there is some heavy, acoustically absorbing, fireproofed cloth. The stage floor is covered with carpet.

The bar is a lengthy, mercury lounge-type bar that ends in the concert hall. Both bar and concert room are fitted with a fixed sound system, that can be operated from a DJ-setup, in the concert room or on stage. Wi-fi is available.

#### PA-setup

The FOH-control devices are set up centrally in the back of the room, not seperated from the audience.

Next to the stage is a secondary PA-room, with control devices for the monitoring and stage connections. You find a detailed 3D-sketch of the standard PA-setup below.

#### Parking and loading

N9 villa concert hall is provided with a loading bay on the left side of the stage. This is accessible by car from the outside, also bigger vehicles (vans, tourbusses) can reach it and can remain parked there during the gig.

#### Electricity

N9 villa concert room is provided with following electrical circuits:  
6 x 16 A / 220V (earthed)



# TECHNICAL RIDER N9 VILLA

VZW DRIEWERF HOERA – MOLENSTRAAT 165 – 9900 EEKLO – BELGIUM

T 0032 9 377 93 94 – info@n9.be - www.n9.be

update: 2019 August 29

When N9's own PA setup is used, N9 guarantees a separate electrical circuit for backline and instruments (16A / 220V). N9 can also provide a high-quality 220V-110V convertor (for US amps and instruments).

## Artist accomodation

On the first floor there are three rooms at the disposal of the artists. One room is a lounge which can be used as extra dining room or dressing room. The second room is a dining room. The third room is a bathroom / dressing room that holds a shower, washing basin and a make-up table with illuminated mirrors. There's also a small kitchen and a toilet. Wi-fi is available.

## Safety

N9 villa is a non-smoking venue that meets all safety requirements issued by the Belgian government. There are sufficient emergency exits and –lighting plus the concert room is completely soundproofed. Use of non-fireproof stage props, smoke machines, effects, etc. have to be checked with the N9 technical staff in advance.

## TECHNICAL INFO

**NATIONAL SOUND REGULATIONS**  
**MAXIMUM SOUND LEVEL AT FOH POSITION:**  
**100 dB L<sub>Aeq</sub> 60 min AND 102 dB L<sub>Aeq</sub> 15 min**

Sound level restrictions can and will be checked by city services at any moment. Any violation of this rule might cause us to lose our license. The venue staff has full authority to intervene when bands don't respect the restrictions. We have 10Eazy measuring software.

## FRONT OF HOUSE

### FOH mixing desk

Midas M32 digital mixer – firmware 4.02

Powerconditioner Furman PI-Plus E

CD recorder Tascam CD-RW900

### Amplifier / Processor

L-Acoustics LA4X

Class D amplification, 96 kHz/32 bit DSP, Ethernet network

4 x 1000W

### Speakers

2 x L-Acoustics Arcs Wide top

2 x L-Acoustics SB 18i sub

### Delay (bar)

1 x Turbosound iQ8

## STAGE

### Monitor mixing desk

Midas M32 digital mixer – firmware 4.02



# TECHNICAL RIDER N9 VILLA

VZW DRIEWERF HOERA – MOLENSTRAAT 165 – 9900 EEKLO – BELGIUM

T 0032 9 377 93 94 – info@n9.be – www.n9.be

update: 2019 August 29

Midas DL 32: 32 input / 16 output stagebox  
Cat5-cables AZS50 compatible, Ethercon connectors

## Monitor speakers

9 x powered wedge Turbosound iQ12 - 2500 Watt

1 x powered sub Turbosound iQ15B – 3000 Watt

## **MICROPHONES (number available)**

Shure SM58 (9)

Shure Beta 58A (3)

Shure SM57 (7)

Shure SM 81 condens. (2)

Shure Beta 57A (2)

Shure Beta 87 (1)

Shure Beta 52 (2)

Shure Beta 91 (1)

Shure B.G. 4.1 condens. (2)

Shure ULX4D Beta58 G51 (2)

Sennheiser MD 421 (3)

Sennheiser e 604 (3)

Sennheiser e 906 (2)

AKG C 414 XLS/ST condens stereo set (1)

AKG D112 (1)

AKG D12 (1)

AKG SE 300B (CK 91) condens. (2)

AKG C 1000 condens. (2)

AKG C 408 condens. (1)

Electrovoice RE 20 (2)

T.bone RB 500 (2)

## D.I.

11 x active D.I.-box (BSS AR-133)

## Mic stands

14 x tall boom stand

9 x small boom stand

4 x floor stand

2 x tall stand round base



# TECHNICAL RIDER N9 VILLA

VZW DRIEWERF HOERA – MOLENSTRAAT 165 – 9900 EEKLO – BELGIUM

T 0032 9 377 93 94 – info@n9.be - www.n9.be

update: 2019 August 29

## LIGHTS

**Patch + mock up: see below.**

**Showfile, Capture file or CAD render on demand.**

Chamsys/Magicq PC Wing Compact console  
Chamsys/Magicq software on Apple Mac Mini  
Iiyama T1731SR-B1 17" ProLite Touch Screen led monitor  
1 x Briteq DMS-26 DMX Merger/Splitter / 2 x in / 6 x out  
2 x dimmerpack Botex DPX-620 / 2 x 6ch.-10A per ch.  
1 x Showtec D-pack 6 Digital Schuko Digital DMX dimmer

4 x American DJ Mega-Tri Bar RGB  
6 x Velleman/Luxibel LX108 Smart Mini Led Pro 7x8w RGBW  
2 x Velleman/Luxibel LX106 Smart Led Par Pro 12x10w RGBW  
2 x Chauvet Intimidator Spot Led 350 movinghead  
4 x Chauvet Rogue R1 wash movinghead  
6 x Briteq Pro Beamer Zoom RGBW indoor 12x7w, 8°-40°

4 x par 56 spots 300W

1 x fogger machine + remote + fan  
1 x Martin Magnum 2500 hazer  
assortment LEE-filters in different sizes/colors

(6 x Par 64 spots 500W (CP60 / CP62), available but not in use)

## BACKLINE

1 x guitar amp Fender '65 Twin Reverb (2x12") 85W  
1 x guitar amp Fender Hot Rod Deville (4x10") 100W  
1 x guitar amp Hughes and Kettner Attax 100 (1x12" ) 100W

1 x bass amp Ampeg B248 (4 x 8") 200W

1 x drumkit Pearl Export Series 22D-5DW/A2:  
basdrum 18"-20" (head 22", 1 x Remo Falam Slam Pad),  
mounted toms 10"-10" (head 10") + 12"-10" (head 12") + 14"-16" (head 14"), floor tom 16"-16"  
(head 16"), snare drum 6 1/2"-14" (head 14"), 1 x DW drummer's throne  
stands: B-800 boomstand, S-800 snare stand, H-800 hihat stand, Gibraltar drum pedal, 2 x C-800  
cymbal stand, TH 86 tom holder, TH 86S tom holder short, AX-20 adapter  
All heads Remo White Coated Ambassador  
Optional cymbal set: Zildjan ZBT: 20" ride, 18" crash, 16" crash, 14" high hat

1 x keyboard stand double braced single tier  
2 x keyboard stand Quik Lok QL/642 2-tier (also single tier usage)  
3 x guitar stand  
1 x saxophone stand

1 x Soundcraft MPMi 20 analogue mixer



# TECHNICAL RIDER N9 VILLA

VZW DRIEWERF HOERA – MOLENSTRAAT 165 – 9900 EEKLO – BELGIUM

T 0032 9 377 93 94 – info@n9.be – www.n9.be

update: 2019 August 29

## DJ GEAR

- 1 x Allen & Heath Xone:42 mixer
- 1 x Denon DJ DN-D4500MK2 – double cd player
- 2 x Technics SL-1210 MK2 turntable
- 2 x Ortofon Concorde Pro Scratch & Mix needle
- 2 x Stanton 500 AL needle

- Power amplifier C-AUDIO GB402 2x400W/4 Ohm
- Power amplifier DYNACORD 2x250W/4 Ohm
- Minidrive BSS FDS334T Loudspeaker Management
- 4 x Speaker JBL CONTROL 28, 8 Ohm, 175W
- 2 x Speaker JBL CONTROL 25, 8 Ohm, 140W
- 2 x Subwoofer JBL SB-2 10", 170W, 8 Ohm

## VIDEO

Beamer Optoma HD141X

Full HD 1920 x 1080 pixels, DLP, 3D, 3.000 ANSI-lumen

Contrastratio: 23.000:1

Outputs/inputs: HDMI (2x), USB (mini), 12v (screen trigger)



## Frontscreen

By Showtex high contrast grey 2,81m height x 5,00m width  
N9 PA SETUP – FRONT VIEW (FOR EQUIPMENT SPECS, SEE ABOVE)



# TECHNICAL RIDER N9 VILLA

VZW DRIEWERF HOERA - MOLENSTRAAT 165 - 9900 EEKLO - BELGIUM

T 0032 9 377 93 94 - info@n9.be - www.n9.be

update: 2019 August 29

Beamer BENQ W1070 (available on demand)

Full HD 1920 x 1080 pixels, DLP, 3D, 2.000 ANSI-lumen

Contrastratio: 10.000:1

Outputs/inputs: 3,5mm jack, component, composite, HDMI (2x), analogue audio, S-video, USB, VGA, 12v (screen trigger)



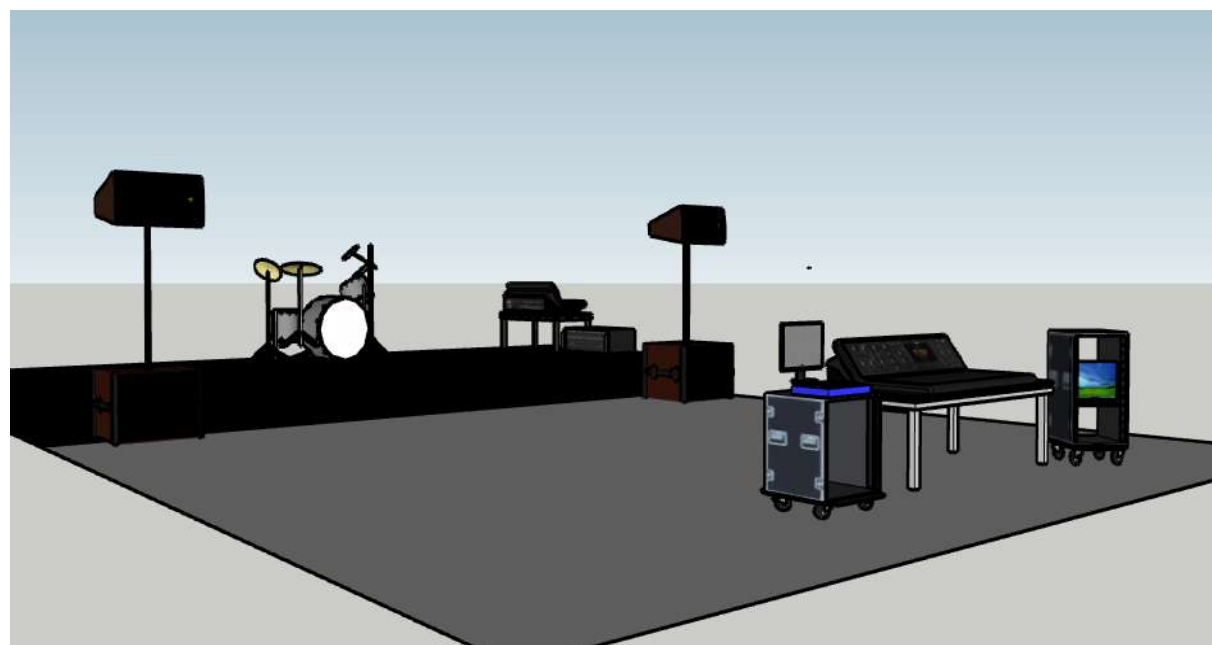
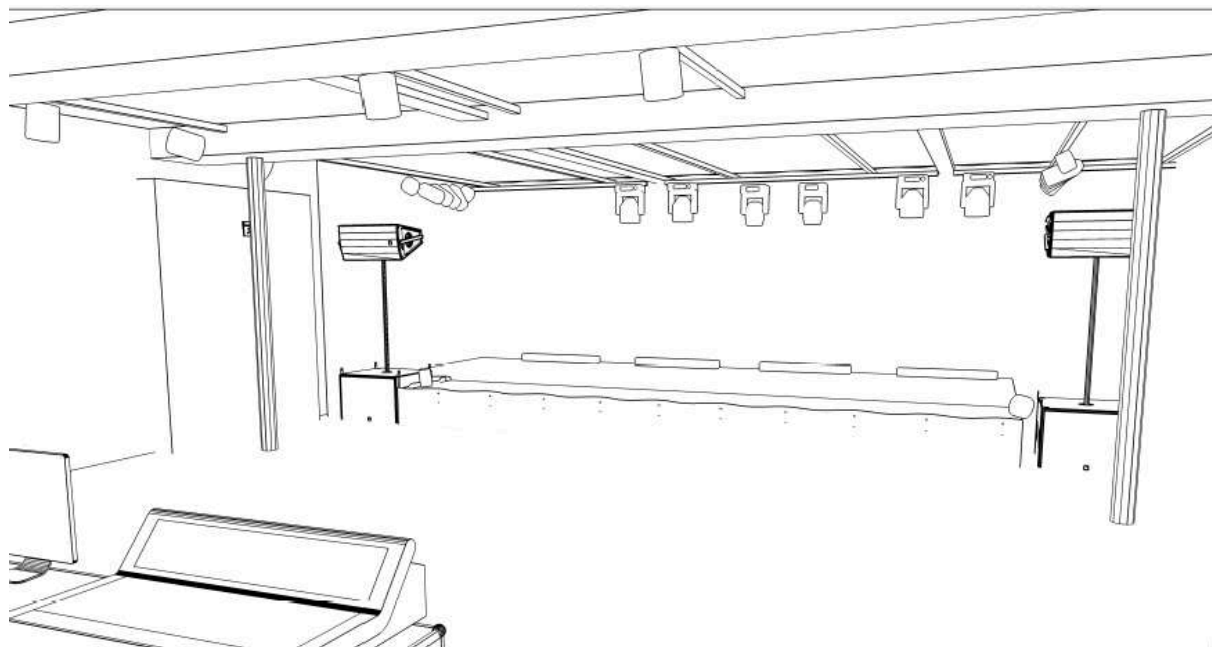


# TECHNICAL RIDER N9 VILLA

VZW DRIEWERF HOERA - MOLENSTRAAT 165 - 9900 EEKLO - BELGIUM

T 0032 9 377 93 94 - info@n9.be - www.n9.be

update: 2019 August 29



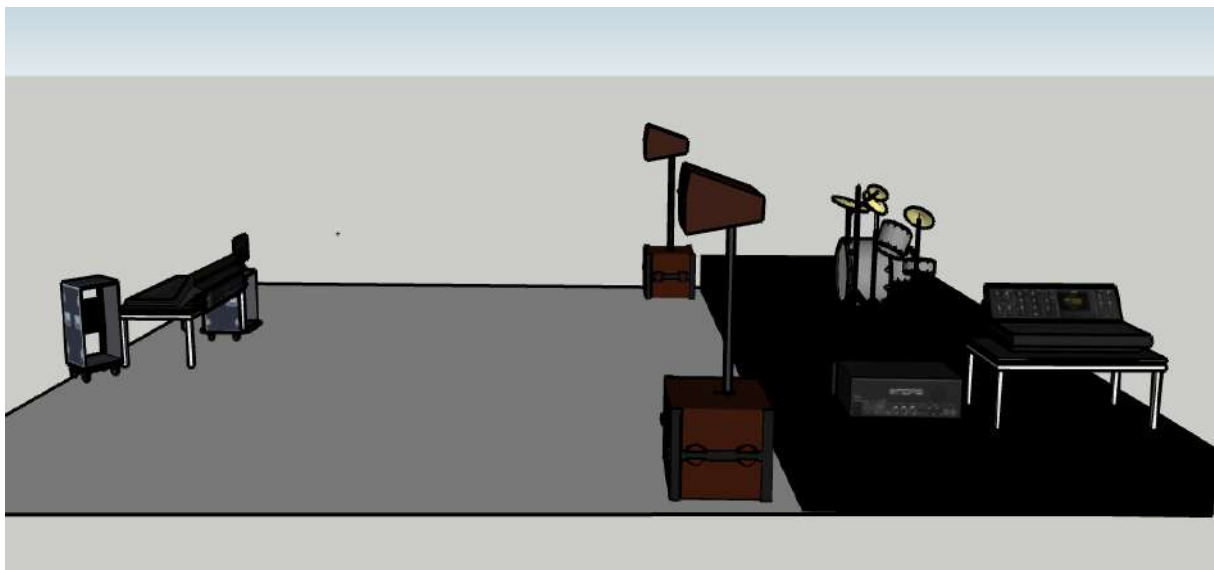
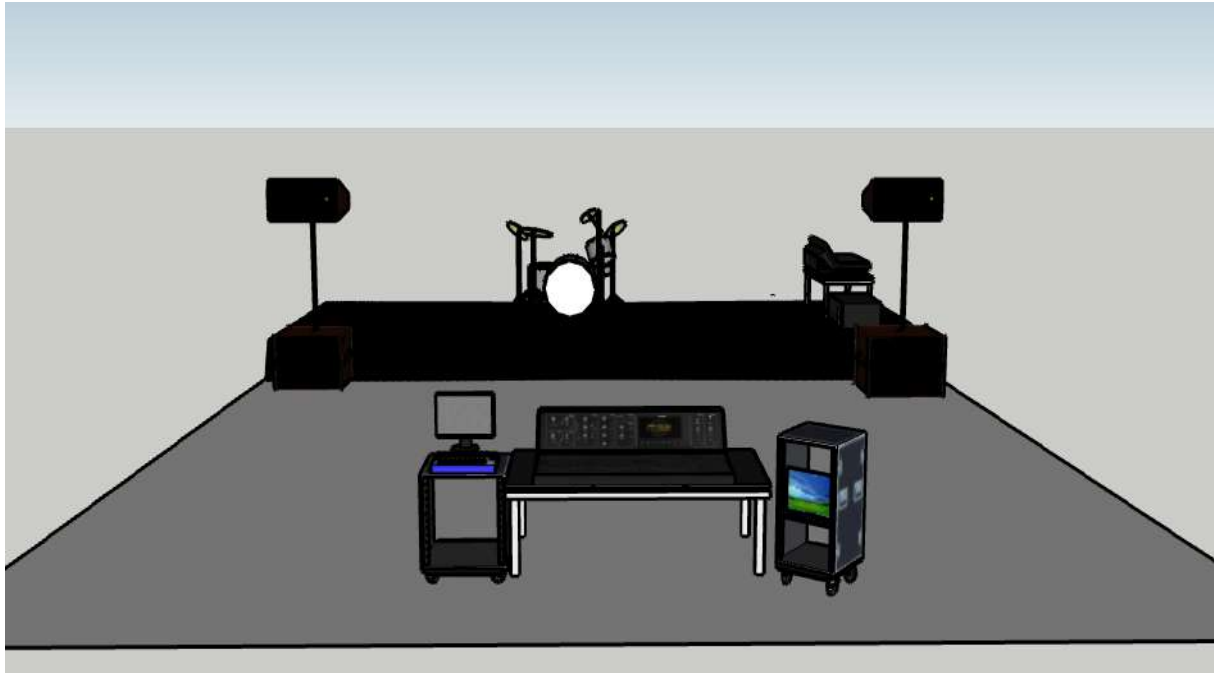


# TECHNICAL RIDER N9 VILLA

VZW DRIEWERF HOERA - MOLENSTRAAT 165 - 9900 EEKLO - BELGIUM

T 0032 9 377 93 94 - info@n9.be - www.n9.be

update: 2019 August 29





## Patch

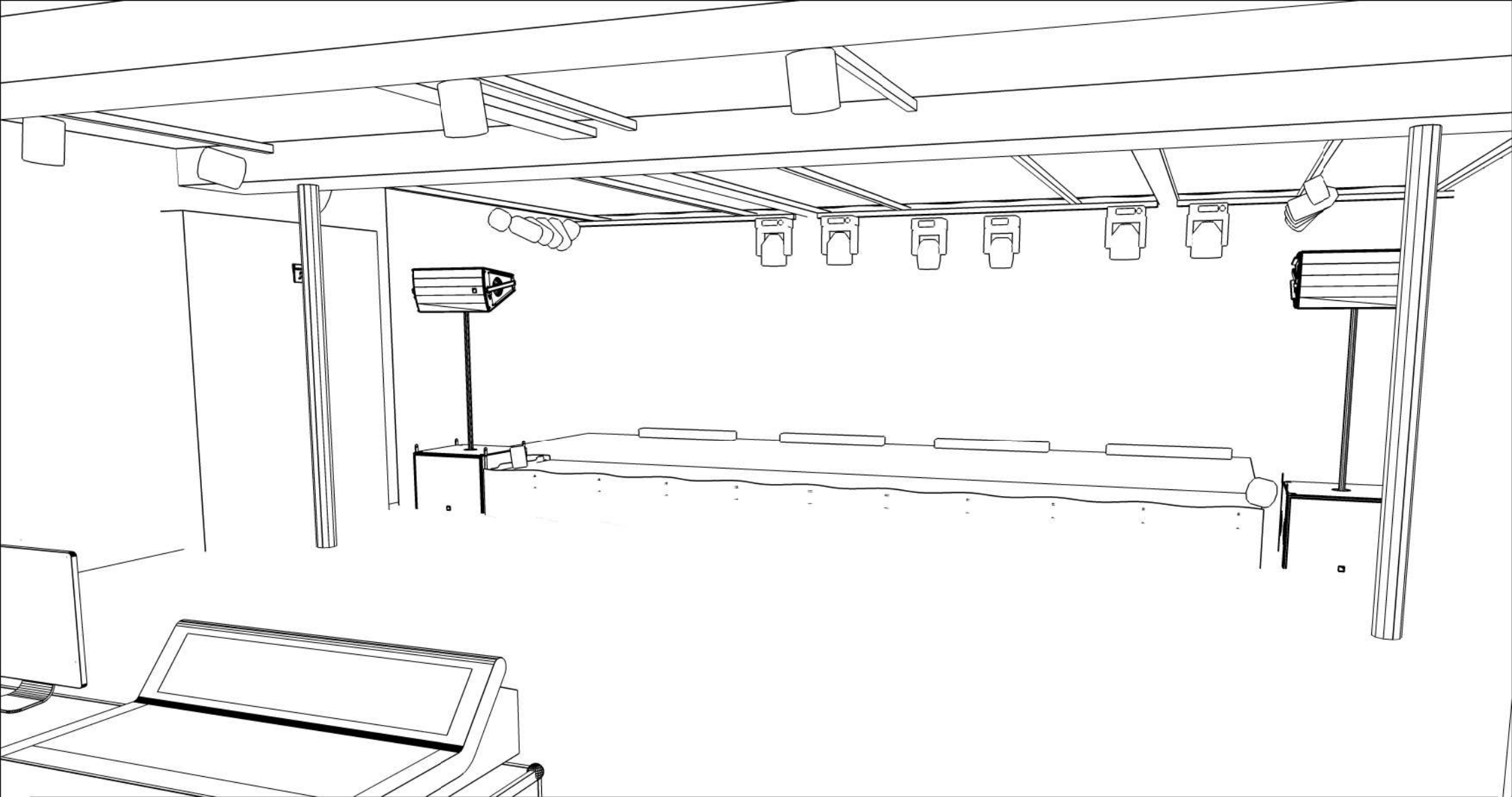
Project: N9 Villa  
 Naam ontwerper: Koen De Paepe  
 Versie ontwerp:

### Apparaten


Groep	Apparaat nr.	Apparaat	Optiek	Circuit	Patch	Mode	Filters Gobo's	Accessoires
	1	Briteq Pro Beamer RGBW Zoom	Standard Lens, 8° - 40°		A.1	Tour Mode, 12 chs		
	2	Briteq Pro Beamer RGBW Zoom	Standard Lens, 8° - 40°		A.13	Tour Mode, 12 chs		
	3	Briteq Pro Beamer RGBW Zoom	Standard Lens, 8° - 40°		A.25	Tour Mode, 12 chs		
	4	Briteq Pro Beamer RGBW Zoom	Standard Lens, 8° - 40°		A.37	Tour Mode, 12 chs		
	5	Briteq Pro Beamer RGBW Zoom	Standard Lens, 8° - 40°		A.49	Tour Mode, 12 chs		
	6	Briteq Pro Beamer RGBW Zoom	Standard Lens, 8° - 40°		A.61	Tour Mode, 12 chs		
	101	Luxibel LX106	Standard Lens, 17°		A.73	10 Channel Mode, 10 chs		
	102	Luxibel LX106	Standard Lens, 17°		A.83	10 Channel Mode, 10 chs		
	201	Luxibel LX108	Standard Lens, 25°		A.93	10 Channel Mode, 10 chs		
	202	Luxibel LX108	Standard Lens, 25°		A.103	10 Channel Mode, 10 chs		
	203	Luxibel LX108	Standard Lens, 25°		A.113	10 Channel Mode, 10 chs		
	204	Luxibel LX108	Standard Lens, 25°		A.123	10 Channel Mode, 10 chs		
	205	Luxibel LX108	Standard Lens, 25°		A.133	10 Channel Mode, 10 chs		
	206	Luxibel LX108	Standard Lens, 25°		A.143	10 Channel Mode, 10 chs		
	301	Chauvet Rogue R1 Wash	Standard Lens, 11° - 48°		A.153	21 Channel Mode, 21 chs		
	302	Chauvet Rogue R1 Wash	Standard Lens, 11° - 48°		A.174	21 Channel Mode, 21 chs		
	303	Chauvet Rogue R1 Wash	Standard Lens, 11° - 48°		A.195	21 Channel Mode, 21 chs		
	304	Chauvet Rogue R1 Wash	Standard Lens, 11° - 48°		A.216	21 Channel Mode, 21 chs		
	401	Chauvet Intimidator Spot LED 350	Standard Lens, 12° - 17°		A.237	Advanced Mode, 14 chs		
	402	Chauvet Intimidator Spot LED 350	Standard Lens, 12° - 17°		A.251	Advanced Mode, 14 chs		

0	Generic Par 36	VNSP/30W, 5,5°	A.488	Control, 1 ch
0	Generic Par 36	VNSP/30W, 5,5°	A.489	Control, 1 ch
0	Generic Par 36	VNSP/30W, 5,5°	A.490	Control, 1 ch
0	Generic Par 36	VNSP/30W, 5,5°	A.491	Control, 1 ch
0	Generic Par 36	VNSP/30W, 5,5°	A.492	Control, 1 ch
0	Generic Par 36	VNSP/30W, 5,5°	A.493	Control, 1 ch
0	Generic Par 36	VNSP/30W, 5,5°	A.494	Control, 1 ch
0	Generic Par 36	VNSP/30W, 5,5°	A.495	Control, 1 ch
0	American DJ Mega Tri Bar (MTB399)	Standard Lens, 40°	B.100	Mode 6, 12 chs
0	American DJ Mega Tri Bar (MTB399)	Standard Lens, 40°	B.200	Mode 6, 12 chs
0	American DJ Mega Tri Bar (MTB399)	Standard Lens, 40°	B.300	Mode 6, 12 chs
0	American DJ Mega Tri Bar (MTB399)	Standard Lens, 40°	B.400	Mode 6, 12 chs


---




**Legende symbolen**

 LX108, Par 36

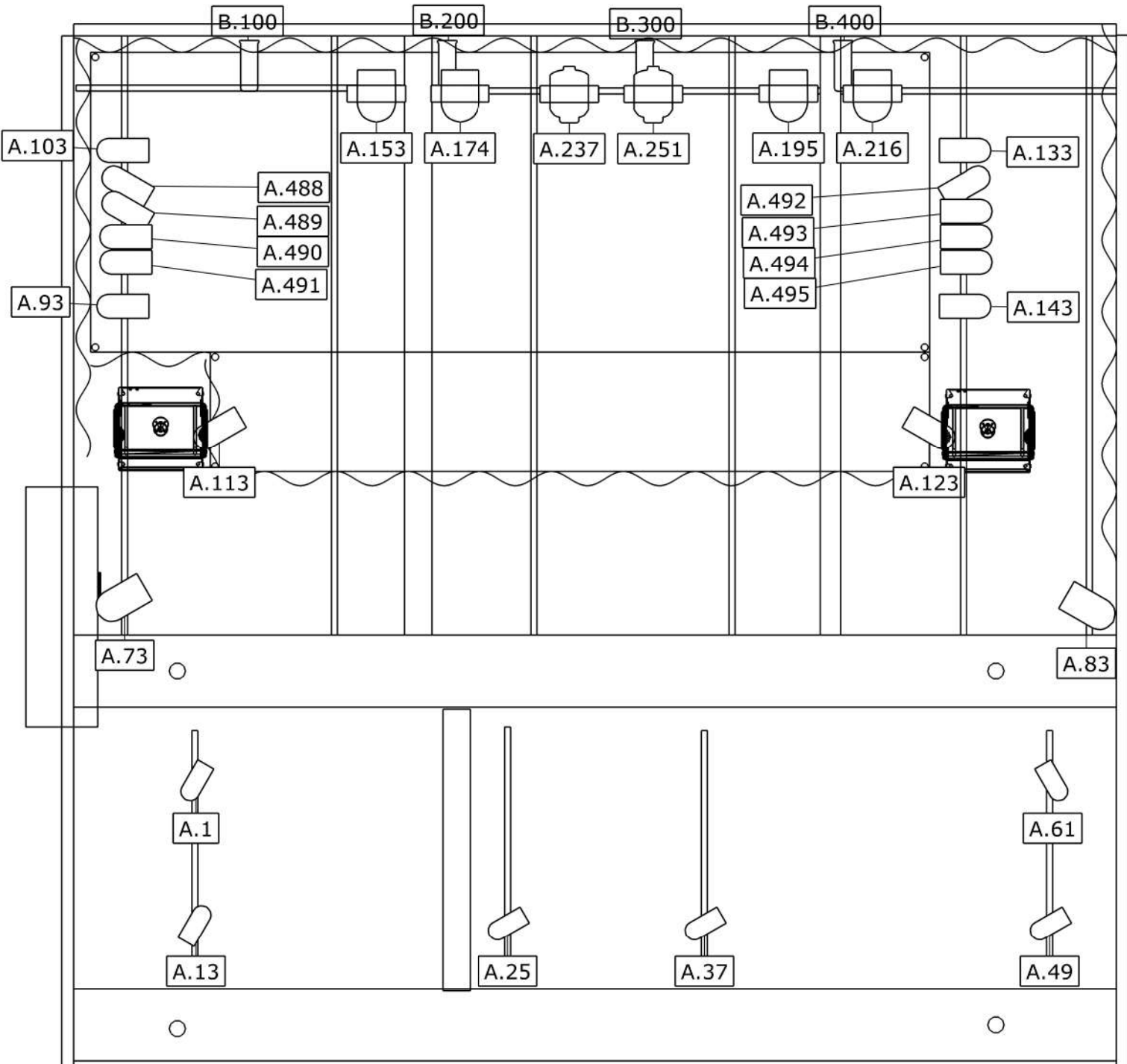
 Pro Beamer RGBW Zoom

 Rogue R1 Wash

 Mega Tri Bar (MTB399)

 LX106

 Intimidator Spot LED 350



**Legende symbolen**

-  LX108, Par 36
-  Pro Beamer RGBW Zoom
-  Rogue R1 Wash
-  Mega Tri Bar (MTB399)
-  LX106
-  Intimidator Spot LED 350

